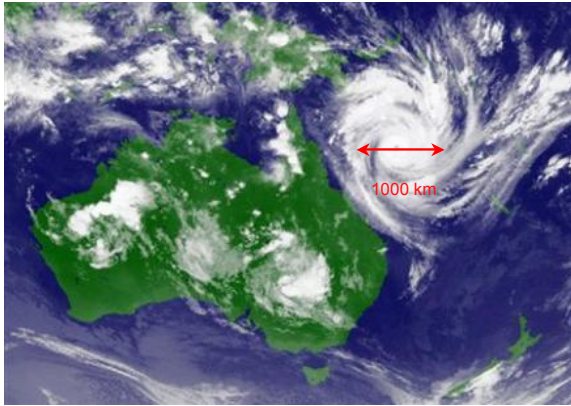


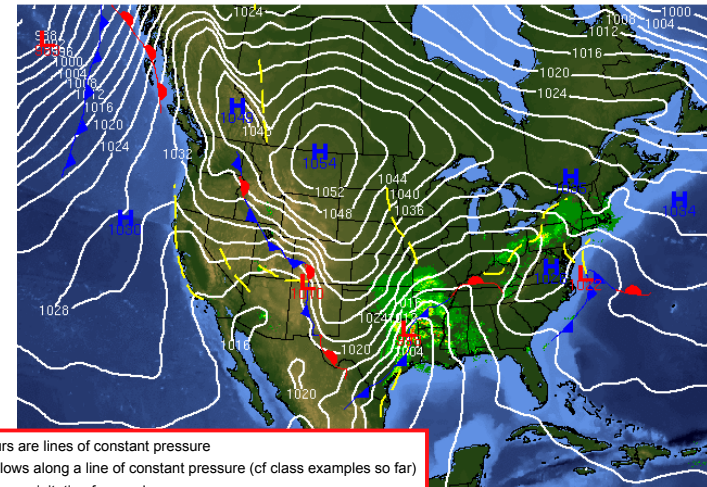
## Cyclone Yasi



2" precip  
per hour

At landfall: Category 4; sustained winds of 70 mps (155 mph)  
(c.f. Katrina: category 3; sustained winds of 205 kph (125 mph))

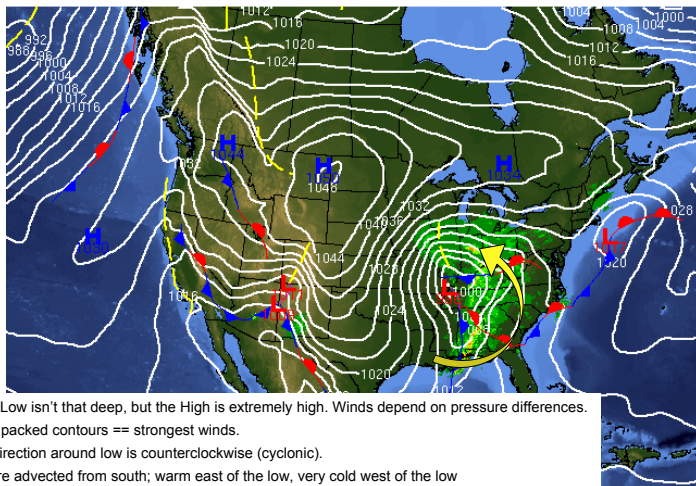
## Blizzard of 1-2 Feb 2011



12Z 01 Feb 2011 (4am PST Tuesday)

University of Wyoming

## Blizzard of 1-2 Feb 2011

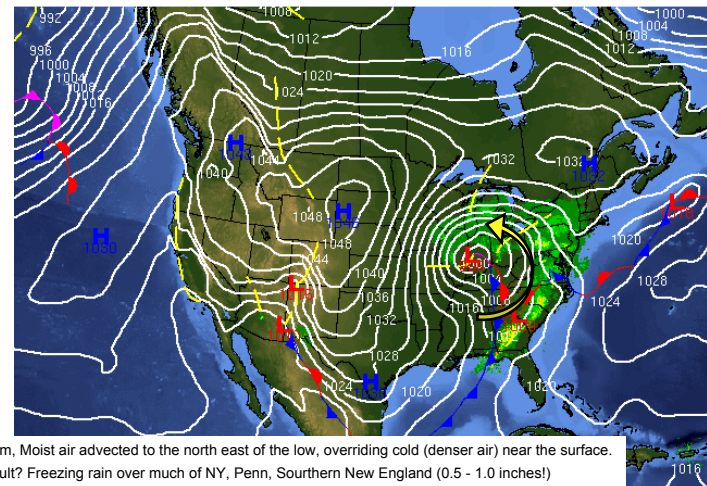


- Notes: 1. Low isn't that deep, but the High is extremely high. Winds depend on pressure differences.  
2. Tightly packed contours == strongest winds.  
3. Wind direction around low is counterclockwise (cyclonic).  
4. Moisture advected from south; warm east of the low, very cold west of the low  
5. Winds in Chicago? From the lake (which is ice free and warm; 42F). Lots of evaporation

00Z 02 Feb 2011 (4pm PST Tuesday)

University of Wyoming

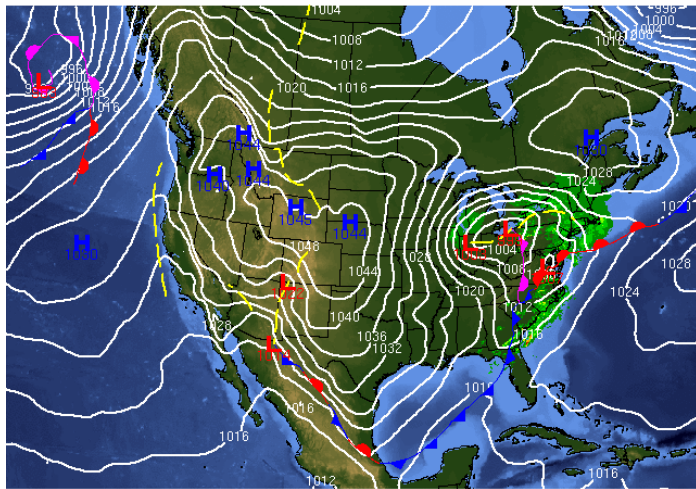
## Blizzard of 1-2 Feb 2011



06Z 02 Feb 2011 (4am PST Wednesday)

University of Wyoming

## Blizzard of 1-2 Feb 2011

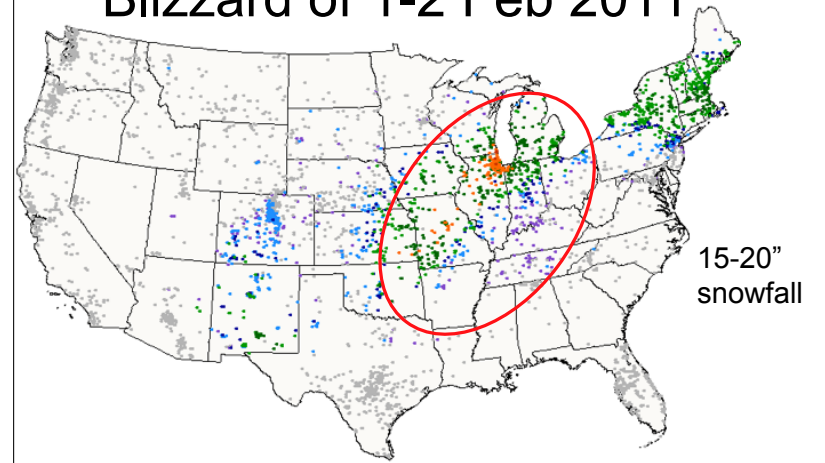


12Z 02 Feb 2011 (4pm PST Wednesday)

University of Wyoming

Daily Snow (inches x.x), for the 24 hour period ending -7:00 am  
USA 2/2/2011

## Blizzard of 1-2 Feb 2011



15-20"  
snowfall

Sustained wind 15m/s (33mph); 1.5" precip (two days)

## Blizzard of 1-2 Feb 2011

